



Sylvan Drive | | Newport | PO30 5FL

Asking Price £265,000



Sylvan Drive |
Newport | PO30 5FL
Asking Price £265,000

Nestled in the charming area of Sylvan Drive, Newport, this end-terrace house offers a perfect blend of comfort and convenience. Built in 1987, the property benefits from a practical layout and a convenient location close to local amenities.

The ground floor features a spacious reception room with plenty of natural light, providing a comfortable living and dining space. Leading off of the living space, the property includes a fitted kitchen that also provides access to the rear garden.

Upstairs, there are three bedrooms, offering flexible accommodation for family living, guests, or home working and a well-appointed bathroom.

As an end-terrace property, the house benefits from additional privacy and outside

- 3 BEDROOMS
- END OF TERRACE
- CLOSE TO NEWPORT AMENITIES
- QUIET RESIDENTIAL AREA
- PRIVATE DRIVEWAY & ALLOCATED PRIVATE PARKING SPACE

Living Room
15'8 x 13'6 (4.78m x 4.11m)

Kitchen
15'8 x 9'10 (4.78m x 3m)

Bedroom 1
11'6 x 9 (3.51m x 2.74m)

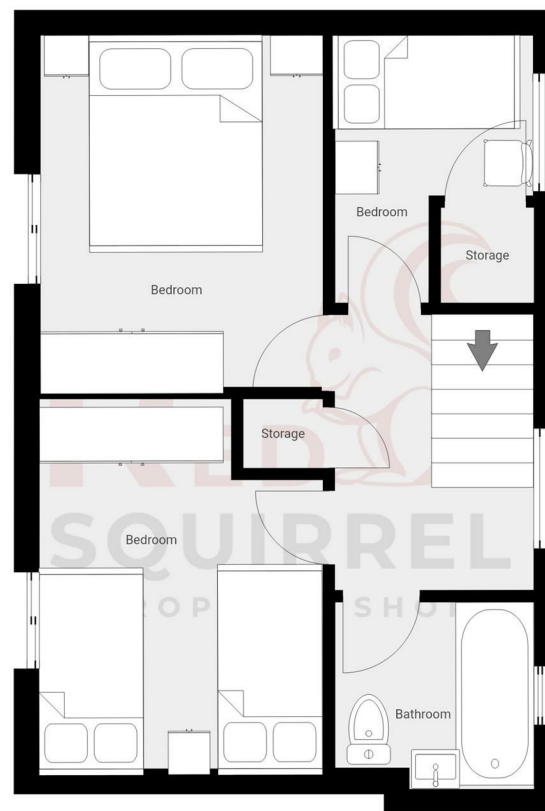
Bedroom 2
9'3 x 9'1 (2.82m x 2.77m)

Bedroom 3
8'6 x 6'4 (2.59m x 1.93m)

Bathroom
5'11 x 6'4 (1.8m x 1.93m)

Rear Garden

Front Exterior



Energy Efficiency Rating		Current	Potential
<i>Very energy efficient - lower running costs</i>			
(92 plus)	A		
(81-91)	B		
(69-80)	C		
(55-68)	D		
(39-54)	E		
(21-38)	F		
(1-20)	G		
<i>Not energy efficient - higher running costs</i>			
England & Wales		EU Directive 2002/91/EC	

Council Tax Band **C**
EPC Rating

3 Langely Court Pyle Street
Newport
Isle of Wight
PO30 1LA
01983 521212

enquiries@redsquirrelpropertyshop.co.uk
www.redsquirrelpropertyshop.co.uk

THIS FLOOR PLAN IS PROVIDED WITHOUT WARRANTY OF ANY KIND. SENSOPHA DISCLAIMS ANY WARRANTY INCLUDING, WITHOUT LIMITATION, SATISFACTORY QUALITY OR ACCURACY OF DIMENSIONS.